

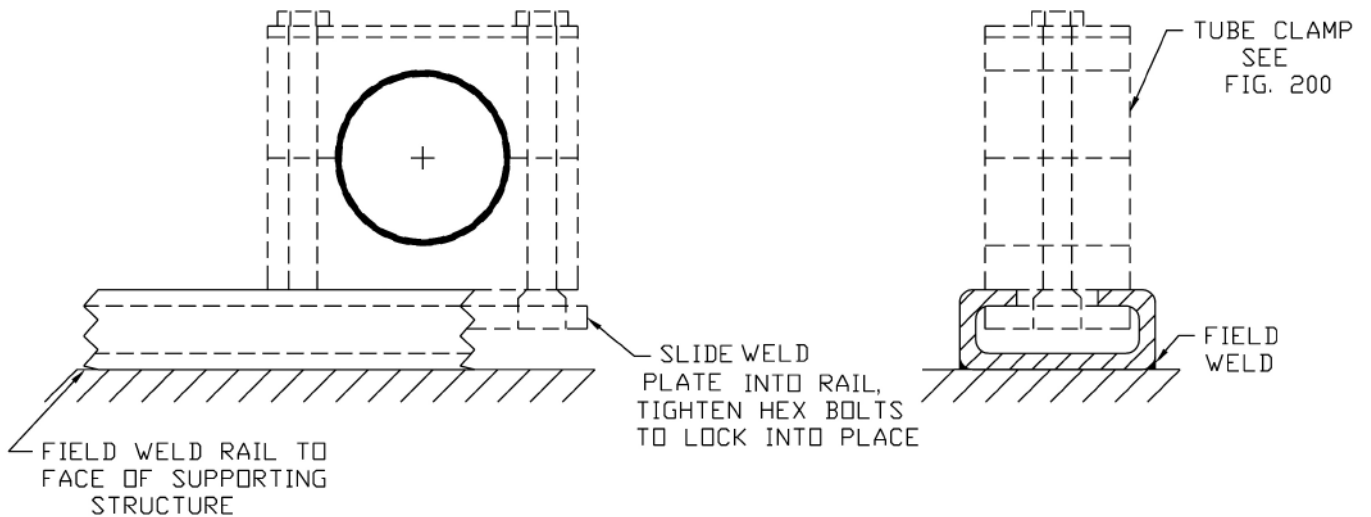
**FIG. 203**

**RAL-1 RAIL MOUNTING**

**Size Range:** Rail Accomodates Clamps from 1/4" through 4" tube

**Hardware Material:** 304 Stainless; 316 Stainless; Zinc Plated Carbon Steel

**Installations:** Weld Rail (RAL-1) to structure or supporting member. Slide clamp weld plate into rail, locate proper position and assemble clamp. Tightening hex bolts of clamp will lock clamp into position.



**Fig 203 Rail Mounting (RAL-1) - Part Number Configurator**

